





KEENSERTS® EPT1 POWER TOOL
BATTERY DRIVEN POWER TOOL FOR CAMLOC® KEENSERTS® INSERTS

Features

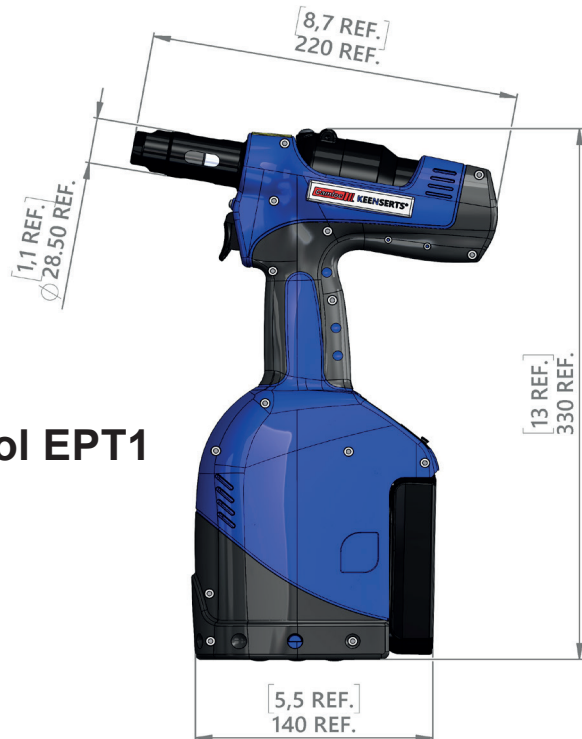
- The battery driven Power Tool EPT1 installs metric KEENSERTS® from size M5 to M12 and imperial sizes from 10-32 (10-24) to ½-20 (½-13).
- Portable tool to make installation easy in any environment.
- It is easy to operate due to the one-trigger operation.
- The installation is quick, consistent and reliable.
- The battery powered system is low maintenance, ergonomic and lightweight.
- Individual adjustments can be made using the integrated force control directly via the tool's display.
- Individual language selection via the tool's display.
- Please note: The package includes the Power Tool EPT1, two rechargeable batteries, a charger, a tool wrench and the installation manual.
- An appropriate nosepiece for each size of KEENSERTS® must be ordered separately.
- All nosepieces are compatible with the hydropneumatic KEENSERTS® Power Tool 3352PT1 and 3352PT2.
- For more information please contact Camloc.

Installation video:



Technical Data

Tool	EPT1
Setting Force (Min - Max)	3.0 - 22.0 kN
Max. Spindle Stroke	7.0 mm / 0.276 inch
Tool Weight (without nosepiece)	2.1 Kg / 4.63 Pounds
Battery Weight	0.3 Kg / 0.66 Pounds
Battery	Li-Ion / 14.4 V / 2.6 Ah
Vibrations	< 0.672 m/s ² / < 2.1 ft/s ²
Sound Pressure Level LpA	71.7 dB (A)
Sound Power Level LwA	82.1 dB (A)
Temperature range	5°C - 40°C



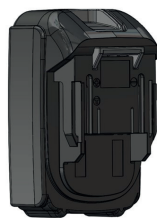
Scope of delivery of the Power Tool EPT1



Tool



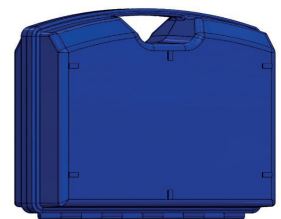
Tool Wrench



Two Batteries



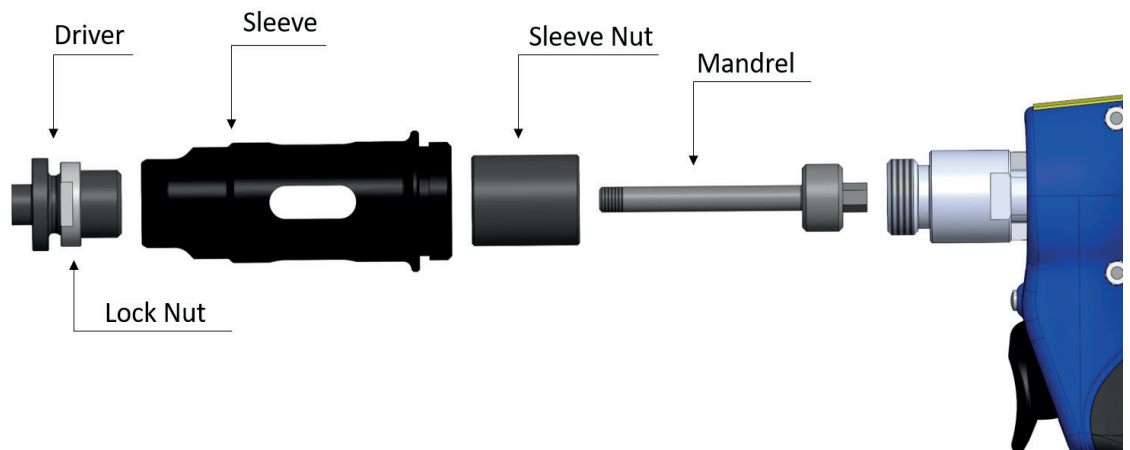
Charging Station



Tool Case

Nosepiece

The KEENSERTS® battery driven Power Tool EPT1 is delivered without nosepieces. The appropriate nosepiece must be ordered separately according to the users needs.

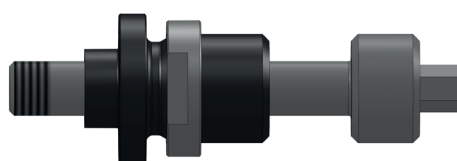


Mandrel, Driver and Lock Nut are components of the nosepiece set for KEENSERTS® installation.

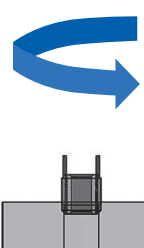
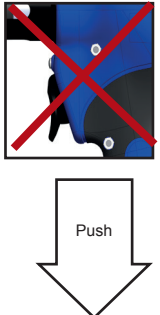

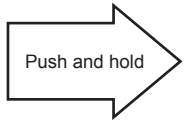

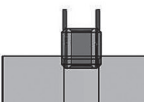




Each component of the nosepiece is available as an individual spare part. In addition to a simplified spare parts order, you can reduce your inventory by using multiple components.

For example, for KEENSERTS® of type KNM6, as well as KNHM6, the same mandrel and lock nut can be used. Only a different driver is required.

The same nosepiece can also be used for the self-locking version (locking type).



Installation procedure

Step 1	Step 2	Step 3	Step 4	Step 5
<p>Screw in the KEENSERTS® by hand for one to two turns.</p>	<p>Push the outer thread of the mandrel into the inner thread of the KEENSERTS®. The screw-in process will start automatically. Do not press the trigger yet!</p>	<p>The screw-in operation stops automatically once the insert reaches its final position (when the thicker part of the Kees touches the countersunk surface).</p>	<p>Press the trigger for the Kees to be installed.</p>	<p>Keep the trigger pressed. After the Kees are pressed in, the mandrel will rotate counter-clockwise until it has fully unscrewed from the KEENSERTS®. Finally, release the trigger.</p>
				
				

Available metric nosepieces



Part number				
KEENSERTS® size	Nosepiece Set	Spare part mandrel	Spare part driver	Spare part lock nut

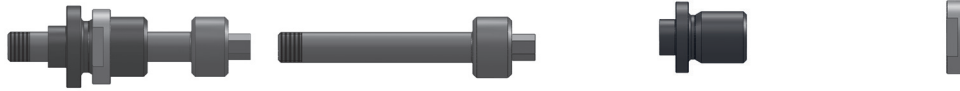
KNM Series

KNM(L)5x0.8	3352TM5x0.8AY	3352S04M5x0.8BY	3352S05M5AY	3352S03-1AY
KNM(L)6x1.0	3352TM6x1.0AY	3352S04M6x1.0BY	3352S05M6AY	
KNM(L)8x1.25	3352TM8x1.25AY	3352S04M8x1.25BY	3352S05M8AY	
KNM(L)10x1.5	3352TM10x1.5AY	3352S04M10x1.5BY	3352S05M10AY	
KNM(L)12x1.75	3352TM12x1.75AY	3352S04M12x1.75BY	3352S05M12AY	

KNHM Series

KNHM(L)5x0.8	3352THM5x0.8AY	3352S04M5x0.8BY	3352S05HM5AY	3352S03-1AY
KNHM(L)6x1.0	3352THM6x1.0AY	3352S04M6x1.0BY	3352S05HM6AY	
KNHM(L)8x1.25	3352THM8x1.25AY	3352S04M8x1.25BY	3352S05HM8AY	
KNHM(L)10x1.5	3352THM10x1.5AY	3352S04M10x1.5BY	3352S05HM10AY	
KNHM(L)12x1.75	3352THM12x1.75AY	3352S04M12x1.75BY	3352S05HM12AY	

Available imperial nosepieces



Part number				
KEENSERTS® Size	Nosepiece Set	Spare part mandrel	Spare part driver	spare part lock nut

KNJ Series

KN(L)1032J	3352T1032AY	3352S01-1032BY	3352S02-10AY	3352S03-1AY
KN(L)1024J	3352T1024AY	3352S01-1024BY		
KN(L)428J	3352T428AY	3352S01-428BY	3352S02-1/4AY	
KN(L)420J	3352T420AY	3352S01-420BY		
KN(L)524J	3352T524AY	3352S01-524BY	3352S02-5/16AY	
KN(L)518J	3352T518AY	3352S01-518BY		
KN(L)624J	3352T624AY	3352S01-624BY	3352S02-3/8AY	
KN(L)616J	3352T616AY	3352S01-616BY		
KN(L)720J	3352T720AY	3352S01-720BY	3352S02-7/16AY	
KN(L)714J	3352T714AY	3352S01-714BY		
KN(L)820J	3352T820AY	3352S01-820BY	3352S02-1/2AY	
KN(L)813J	3352T813AY	3352S01-813BY		

KNHJ Series

KNH(L)1032J	3352TH1032AY	3352S01-1032BY	3352S02-H10AY	3352S03-1AY
KNH(L)1024J	3352TH1024AY	3352S01-1024BY		
KNH(L)428J	3352TH428AY	3352S01-428BY	3352S02-H1/4AY	
KNH(L)420J	3352TH420AY	3352S01-420BY		
KNH(L)524J	3352TH524AY	3352S01-524BY	3352S02-H5/16AY	
KNH(L)518J	3352TH518AY	3352S01-518BY		
KNH(L)624J	3352TH624AY	3352S01-624BY	3352S02-H3/8AY	
KNH(L)616J	3352TH616AY	3352S01-616BY		
KNH(L)720J	3352TH720AY	3352S01-720BY	3352S02-H7/16AY	
KNH(L)714J	3352TH714AY	3352S01-714BY		
KNH(L)820J	3352TH820AY	3352S01-820BY	3352S02-H1/2AY	
KNH(L)813J	3352TH813AY	3352S01-813BY		